



MORGAN Li

FIXTURES | FURNITURE | GRAPHICS

MORE THAN MADE

So much goes into creating a lasting impression. Consumers today have more options than ever, and every interaction you have with them can have a significant impact on whether or not you can bring them back. Every last detail matters. So when you're looking for a partner to create fixtures, furniture, and graphics that can transform your space, look no further than Morgan Li.

With decades of experience engineering, fabricating, and installing elements built to transform a physical space, Morgan Li has been the unsung hero behind some of the biggest and boldest brands worldwide.

So when you need **fixtures**, **furniture**, or **graphics** completed on time and on budget, we've got you covered.

 **MORGAN Li**

OUR CAPABILITIES



METAL FABRICATION



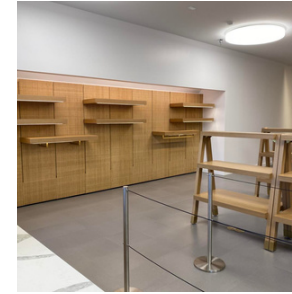
CUSTOM MILLWORK



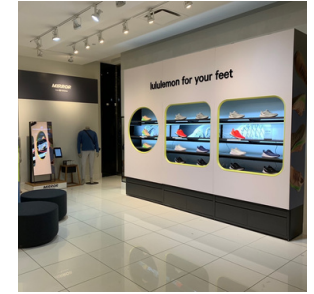
POWDER COATING



GRAPHIC COMMUNICATIONS



RAPID PROTOTYPING



INTEGRATED PROGRAMS

ABOUT MORGAN Li

On time, on budget, and just like the rendering. From design & engineering to production, assembly, and installation, we combine skill and scale to transform your ideas into reality.

- Privately Held Limited Liability Company
- 302 Employees
- Rapid, Consistent Growth
 - 2019: \$50 Million
 - 2020: \$32 Million
 - 2021: \$53 Million
 - 2022: \$85 Million (Est.)
- Domestic Production & Warehousing
 - Four Locations, 725,000 square feet
 - Capital Investments Nearing \$10 Million in Past 5 Years
- Import Partners
 - Long standing partnerships with factories in Kunshan and Xiamen China, Taiwan and Vietnam
- Blended Manufacturing
 - Close communication & project management between domestic and international production helps to optimize cost and scale.

SELECT PARTNERS

- Athleta
- AWAY
- Banana Republic
- Brooklinen
- Cresco Labs
- GAP
- Lululemon
- Old Navy
- Peak Design

CONTACT

Jonathan Rosenband | President
Morgan Li | 383 E. 16th Street, Chicago Heights, IL, 60411
jrosenband@morganli.com
(773) 710-7207